

SEGUGIO *plus* GPL

RGDGPLMP1R



GAS LEAKAGE DETECTOR - LPG -

Residential LPG gas detector, microprocessor-based, with output for both 230V~ and 12V~/= cut-off valves. Test function. Precalibrated sensor, directly replaceable by the user. IMQ quality mark and compliance with CEI-EN 50194-1 certify the absolute reliability and efficiency of the device.

Pre-calibrated sensor (ACMG01), replaceable directly by the user.

TECHNICAL FEATURES

| | |
|----------------------|--|
| Power supply | 230V~ ±10% 50Hz |
| Output (relay) | 6(2)A @ 250V~ SPDT |
| Sensor type | SnO2 semiconductor |
| | Precalibrated sensor, directly replaceable by user |
| Sensor life | 5 years |
| Alarm threshold | 10% L.E.L. |
| Green LED indicator | Detector active |
| Yellow LED indicator | Detector failure |
| Red LED indicator | Alarm |
| Alarm buzzer | 85dB (A) @ 1m |
| IP rating | IP42 |
| Dimensions | H84 W148 D40mm |

Notes: (1) Facility for a remote sensor (SGA ***), for the control of a further zone. (2) Depressed button test for one sec.: Press the test button for 1 sec. to silence the buzzer, Press the test button for at least for 5 secs to check.

SEGUGIO CO ACCUMULATION MODE

RGDCOKMP1

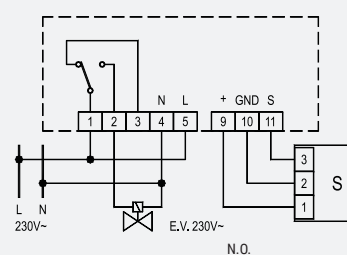


GAS LEAKAGE DETECTOR - CO -

Residential carbon monoxide detector, microprocessor-based, with output for cut-off valves, fans or any other electrical actuators with 230V~ power supply. Carbon monoxide detection with accumulation mode: it simulates the gas accumulation in the human body according to standard EN50291.

TECHNICAL FEATURES

| | |
|----------------------|----------------------|
| Power supply | 230V~ -15/+10% 50Hz |
| Output (tight relay) | 6(2)A @ 250V~ SPDT |
| Internal sensor(1) | Electrochemical cell |
| Button | Alarm Test-Reset |
| Alarm | Buzzer 85dB(A) @ 1m |
| Green LED indicator | Detector active |
| Yellow LED indicator | Detector failure |
| Red LED indicator | Alarm |
| Dimensions | H84 W148 D40mm |
| IP rating | IP42 |



Notes: (1) Facility for a remote sensor (SGA ***), for the control of a further zone. (2) Press the test button for 1 sec. to silence the buzzer, Press the test button for at least for 5 secs to check. (3) The remote sensor to be used are: SGA MET, SGA GPL.